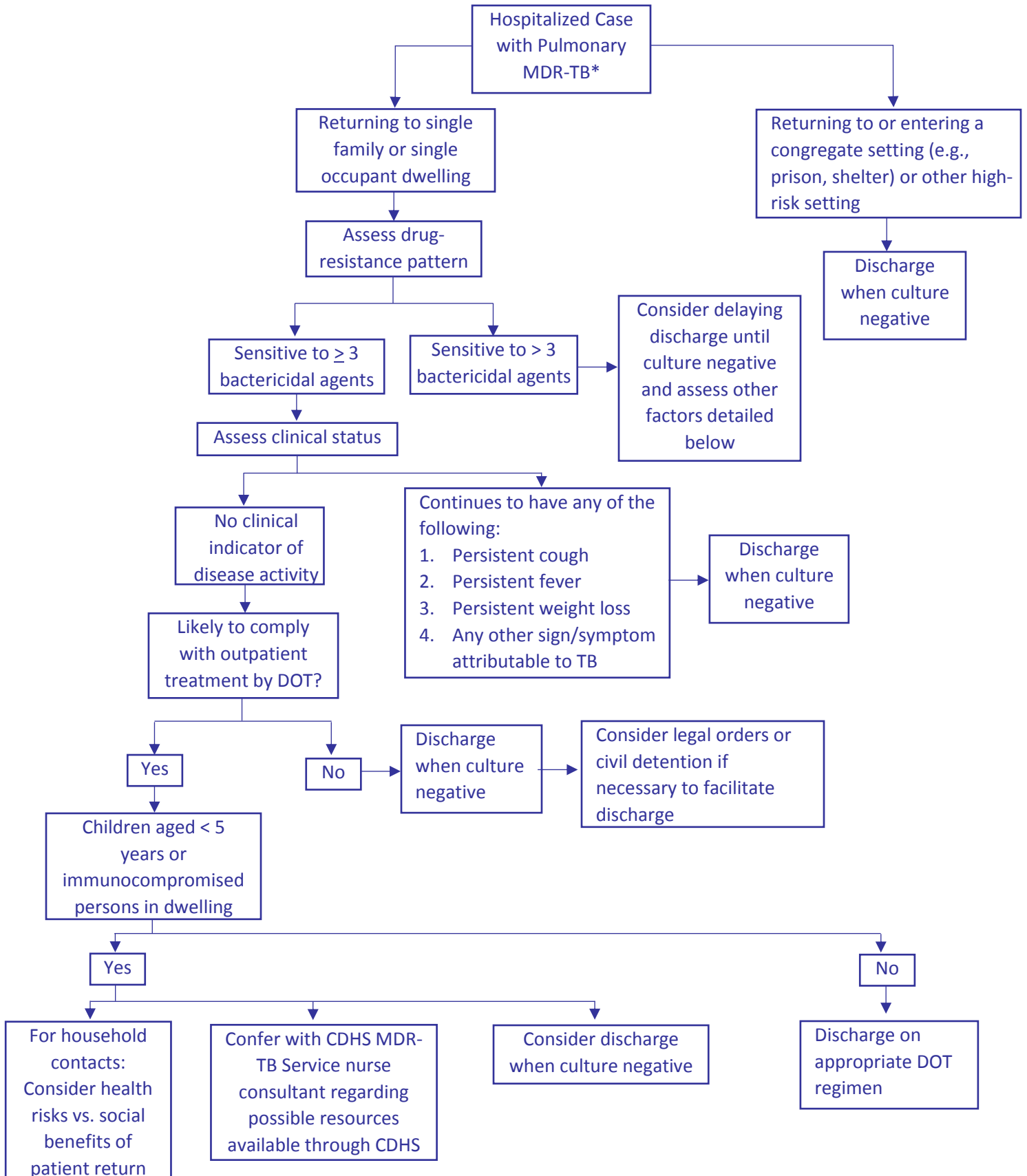


### Appendix 3 – Algorithm for MDR-TB Cases and Hospital Discharge CDPH/CTCA Joint Guidelines



\* An appropriate MDR-TB treatment regimen has been initiated and tolerated for at least two weeks AND a favorable clinical response to therapy has been demonstrated by resolution of fever, resolution or near-resolution of cough, no further progression in weight loss, absence of any other new or progressive sign / symptom that may be attributable to TB disease, AND three consecutive smears from sputa collected on different days are AFBnegative, at least one of which is a first morning specimen