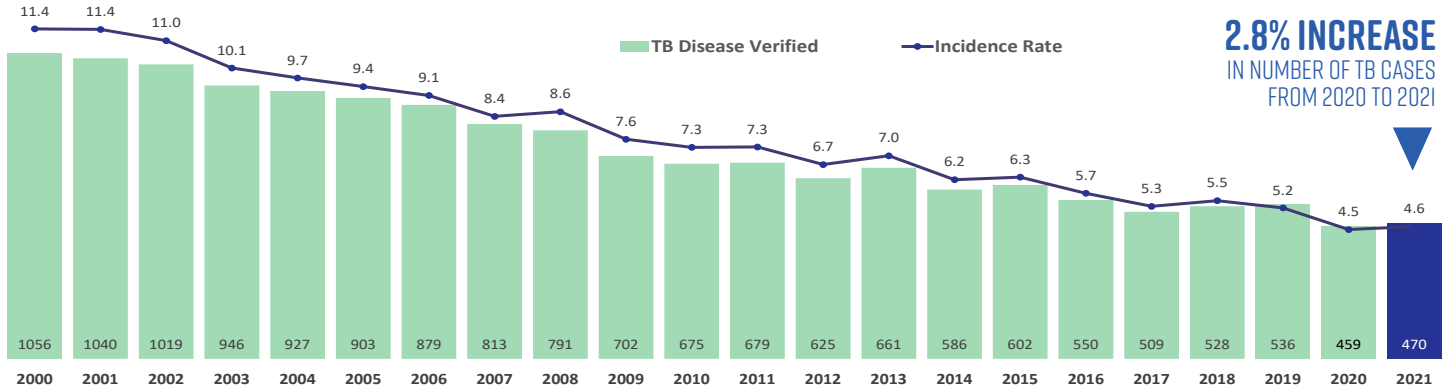


TUBERCULOSIS

in Los Angeles County 2021

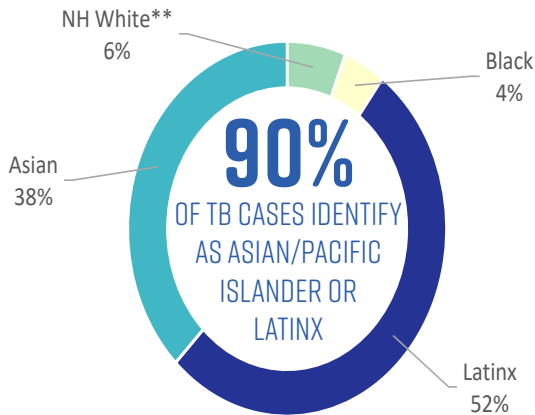


1,640 TB EVALUATIONS INITIATED

6% INCREASE IN TB EVALUATIONS

17% ESTIMATED CASES DUE TO RECENT TRANSMISSION (2019-2020)

708,640 ESTIMATED PERSONS WITH LATENT TB (2019)

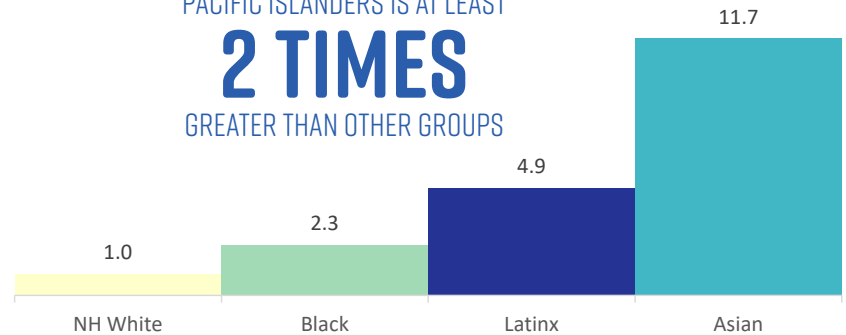


**NH = NON-HISPANIC. RACE/ETHNICITY CATEGORY 'ASIAN' INCLUDES CASES WHO REPORTED BEING ASIAN OR PACIFIC ISLANDER.

CASES PER 100,000 FOR ASIAN/PACIFIC ISLANDERS IS AT LEAST

2 TIMES

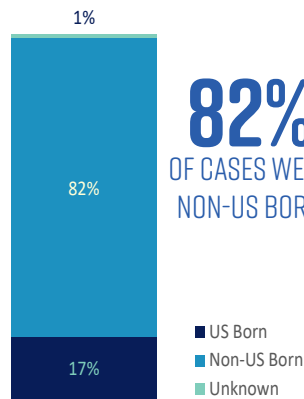
GREATER THAN OTHER GROUPS



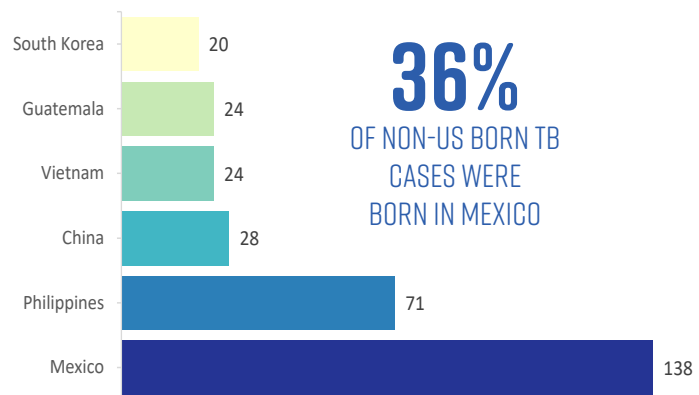
65% OF CASES ARE MALE



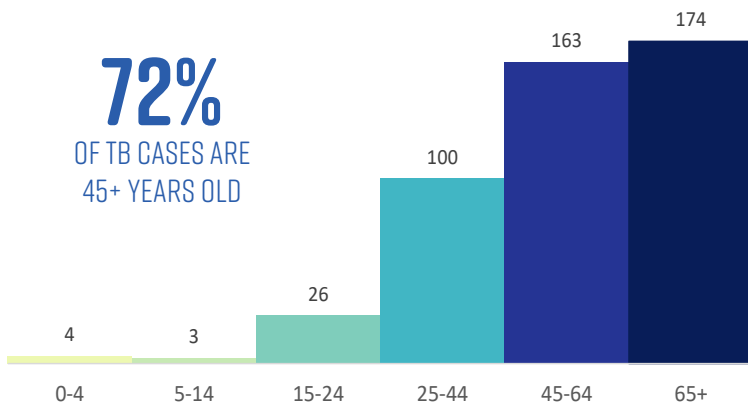
82% OF CASES WERE NON-US BORN



36% OF NON-US BORN TB CASES WERE BORN IN MEXICO



72% OF TB CASES ARE 45+ YEARS OLD



CHARACTERISTICS

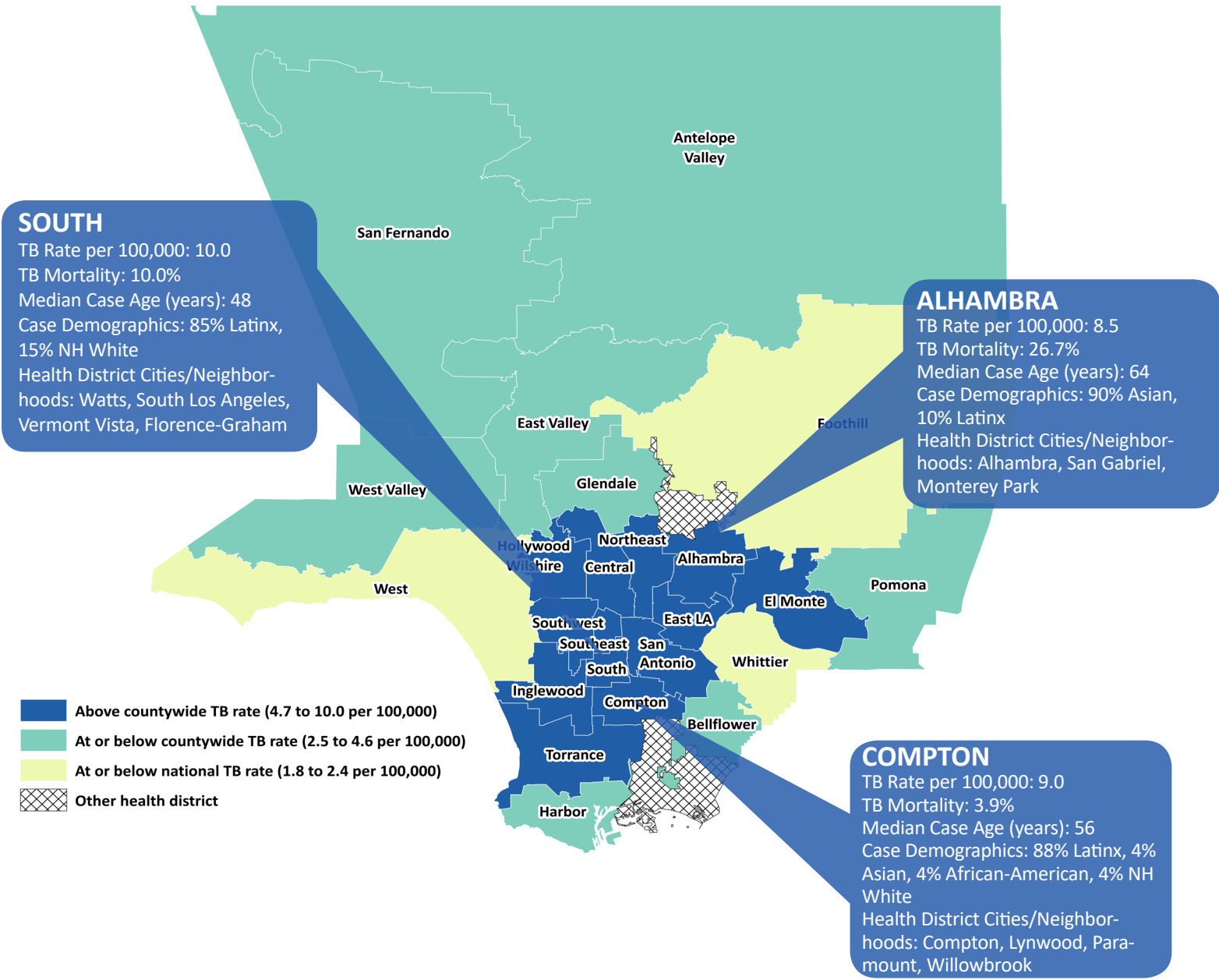
- 17%** OF 2020 TB CASES DIED BEFORE COMPLETING TREATMENT (+5.2%)
- 16%** OF 2021 TB CASES (WITH DRUG SUSCEPTIBILITY TESTS) HAD FIRSTLINE DRUG RESISTANCE (-2.0%)
- 31%** OF 2021 TB CASES HAD DIABETES (-0.5%)
- 7%** OF 2021 TB CASES EXPERIENCED HOMELESSNESS WITHIN 12 MONTHS BEFORE DIAGNOSIS (+0.9%)
- 4%** OF 2021 TB CASES WERE CO-INFECTED WITH HIV (+0.1%)

TUBERCULOSIS

in Los Angeles County 2021



TUBERCULOSIS CASE RATES BY HEALTH DISTRICT, 2021



TUBERCULOSIS CONTROL PROGRAM HIGHLIGHTS, 2021

- » Partnered with clinics and community organizations to control and eliminate TB transmission in LA County.
- » Consulted on the diagnosis, treatment, & hospital discharges involving possible & confirmed TB disease.
- » Provided TB testing and treatment incentives for patients: 19,647 food gift cards, 284 meal vouchers/coupons, 549 gas cards, and 3,765 nights of housing.
- » Oversaw investigations of nearly 1,552 priority contacts associated with 286 pulmonary TB cases.
- » Continued addressing the county's 17.0% of TB cases due to recent transmission, which is higher than that of California (13.1%) and the USA (12.5%) estimates (2019-2020 CDC data).